

## **SNC-P1 / P5 / DF40 / DF70 / CS10 / CS11 / RZ25 Upgrade manual**

This manual explains how to upgrade the firmware of SNC- P1 / P5 / DF40 / DF70 / CS10 / CS11 / RZ25.

### **Preparation:**

1. You need the following equipments.
  - A computer (Windows)
  - A power supply for the camera
  - A network cable ( and a hub if necessary)
2. You need to store the Upgrade file (SNC-xxxFirmwareUpgrade.exe) on the computer.

### **Caution:**

1. Before upgrading,
  - Close all browser and software (ex. RSM/NSR) that are accessing the camera.
  - You must restart the power of the camera
  - When the camera is located remote, you must reboot the camera by the reboot button on the Initialize tab of the System setting page.
2. Do not turn off the camera until the upgrading is completed. (About 10 minutes)
3. Log in PC as Administrator.
4. It is recommended to set the IP address of the camera by manually. If you set it by DHCP, the Upgrade program may not be able to detect the completion of the upgrading.
5. Deactivate the Image memory function before starting the upgrading.
6. Before execute the upgrade tool, confirm the Network LED of the camera has been blinking.

## **Procedure:**

\* This manual is described that the IP address of the camera is set to 192.168.0.100 and 192.168.0.101.

**1. Connect the camera to the computer according to the supplied Installation manual.**

**2. Turn on the camera.**

Turn on the camera.

When the camera is located on a remote network, you must reboot the camera by the reboot button on the Initialize tab of the System setting page.

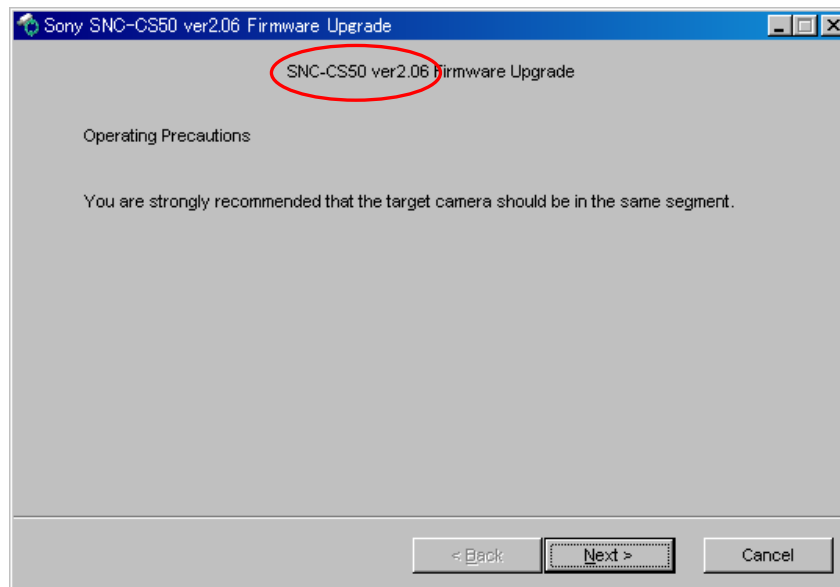
It takes about 2 minute until the system starts.

### 3. Execute the Upgrade tool

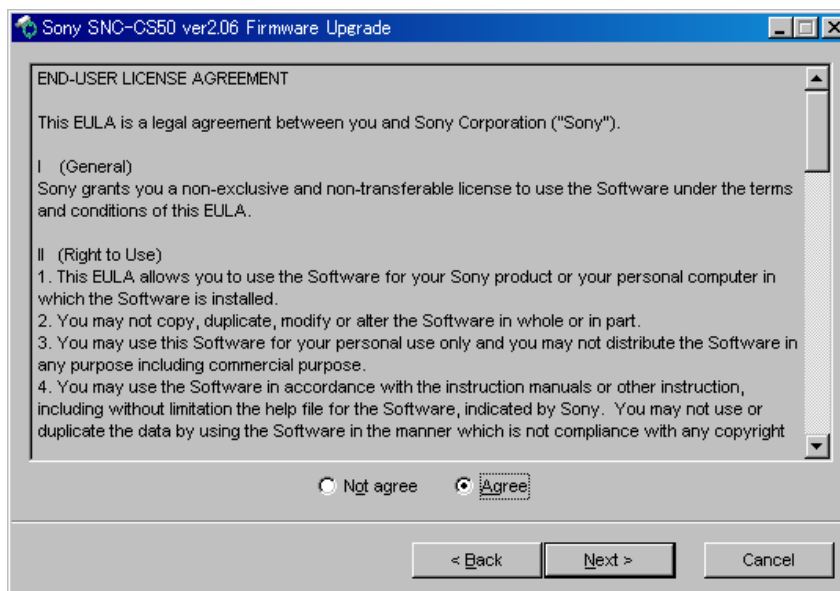
#### 3.1. Double-click the SNC-xxxFirmwareUpgrade.exe

Confirm if the model name and the Software version are proper.

Read the precautions carefully, then press the **Next>** button.



3.2. Read the Software License Agreement carefully and accept the agreement to continue the upgrading. Then select the **Agree** and click the **Next>** button.



3.3. Select the mode of the upgrade.

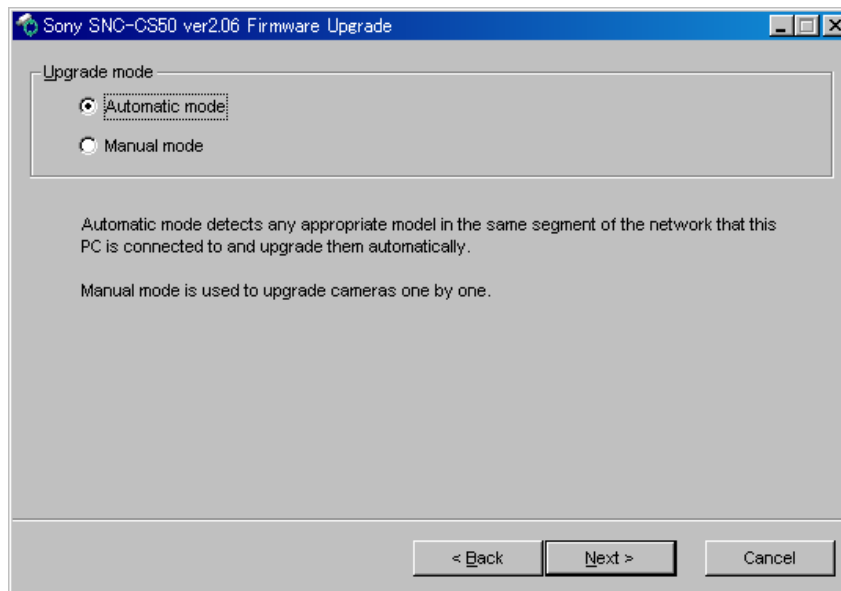
**Automatic mode**

The upgrade of plural camera is possible at the same time.

**Manual mode**

The upgrade of a camera is possible one by one.

After select either mode, then click Next> button.

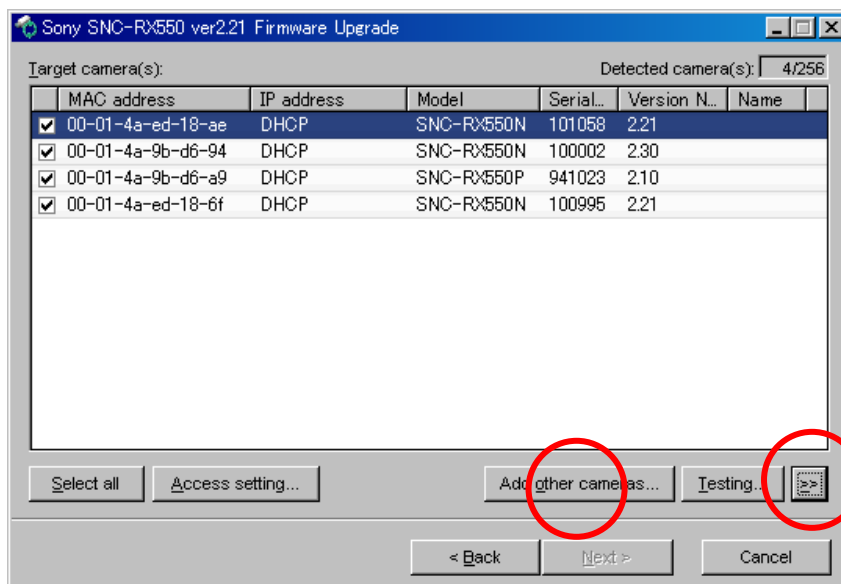


Explanation of "Automatic mode" is section 3-4.

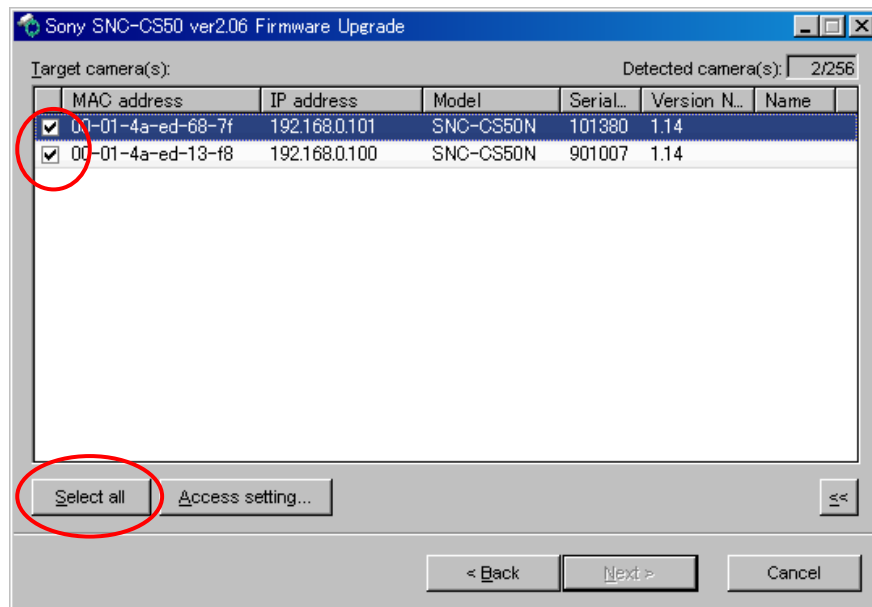
Explanation of "Manual mode" is section 3-11.

3.4. It shows the camera lists which is automatically detected.

If you add more cameras, show A.1.

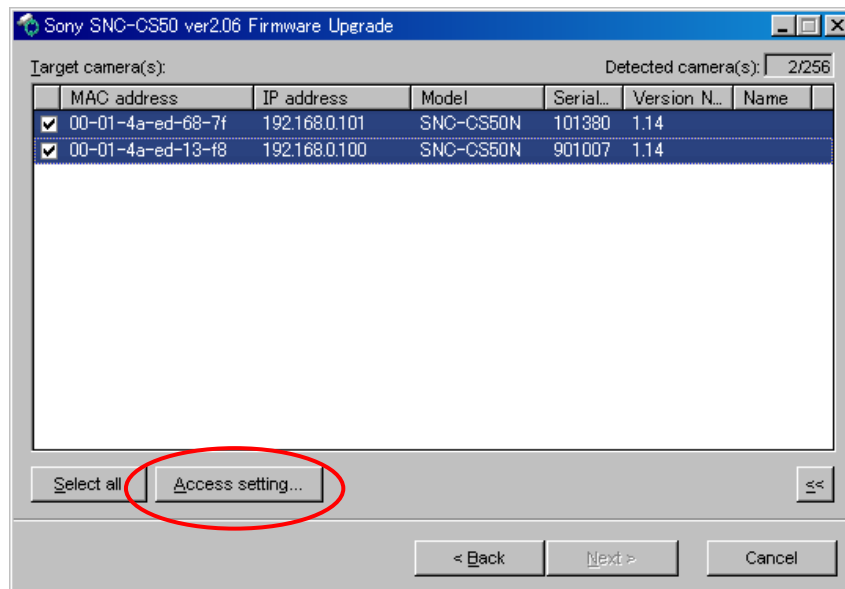


3.5. Select the camera that dose the upgrade.Put the check in the checkbox of camera..Then next step is "username/password" setting. If "username/password" setting of all camera is same setting, click "**Select all**" button.

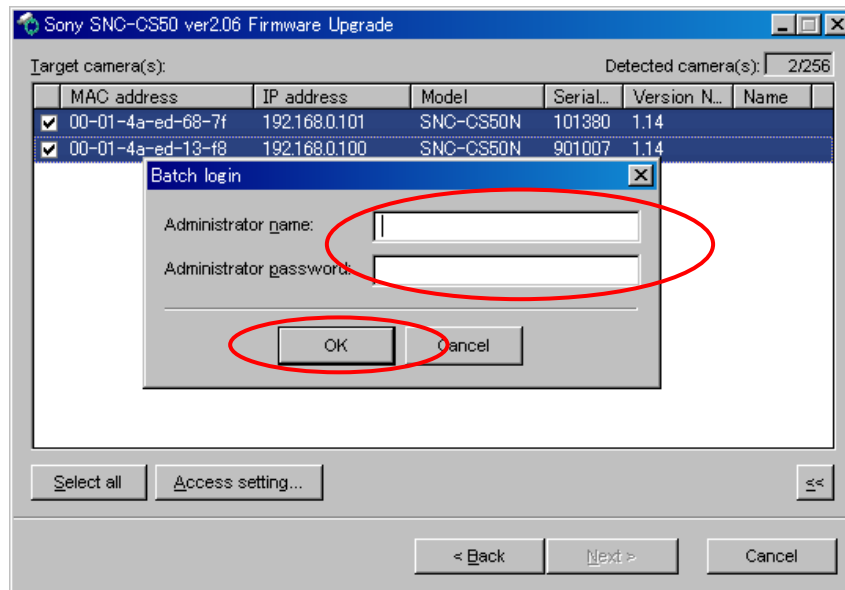


If each camera has various setting,, click "**Access setting**"button without to click "**Select all**"button.

3.6. After you confirmed the terget camera is marked with reversal color, click "**Access setting**"button to input the username and password.



3.7. Input the Administrator's name and password, in the fields. Same words are saved to all selected cameras. Then click "OK" button.

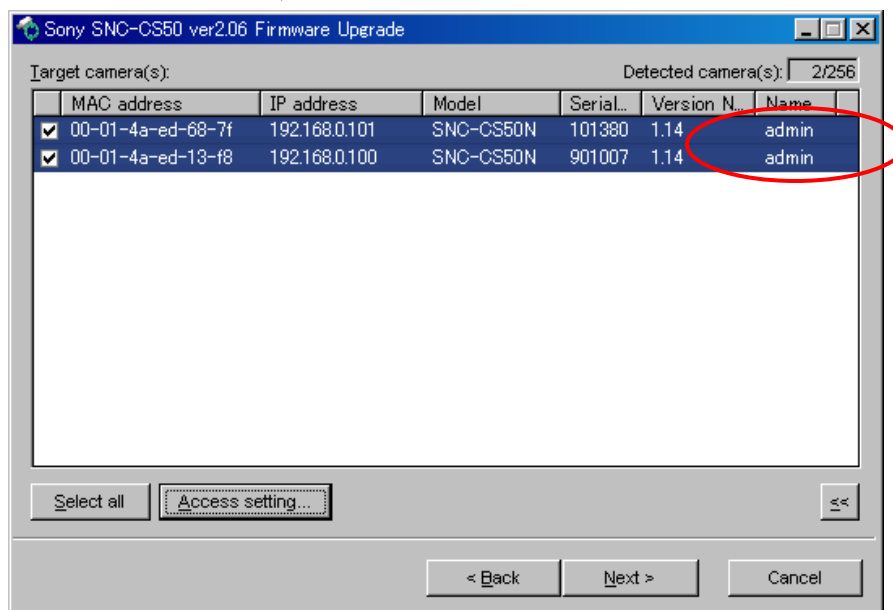


When you clicked "Select all" button without to click "Access setting" button, you can input the Administrator's name and password to each camera.

3.8. The Administrator's name are displayed in "name" column. Confirm the Administrator's name, then click Next> button.

If you confirm the connection, click  buttons and click "Testing..."

If you want to more informations, show A.2.



3.9. Confirm whether the camera that checked in section "3.4" is displayed.

When you succeed the setting of the camera, select **Retain the current settings**.

When you succeed and save the setting of the camera, select **Backup the current settings**.

Then click "**Upgrade**" button. The configuration file is saved as follows.

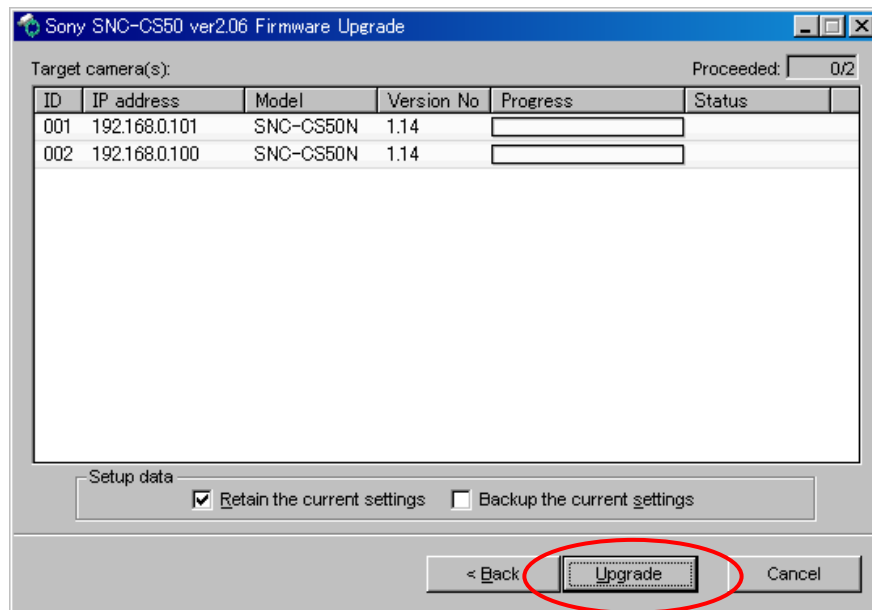
The case of Windows XP:

"C:\Program Files\Sony\SNC FirmwareUpgrade\Configurations\yyMMddhhmm"

The case of Windows VISTA:

"C:\Users\[user name]\AppData\Local\VirtualStore\Program Files\SONY\SNC FirmwareUpgrade\Configurations\yyMMddhhmm"

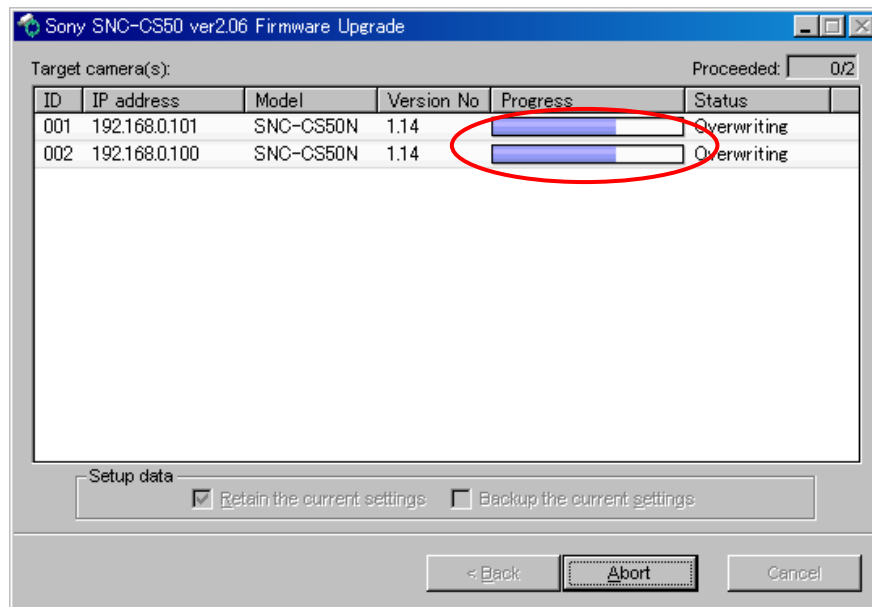
(yy:year, MM:month, dd:day, hh:hour, mm:minute)



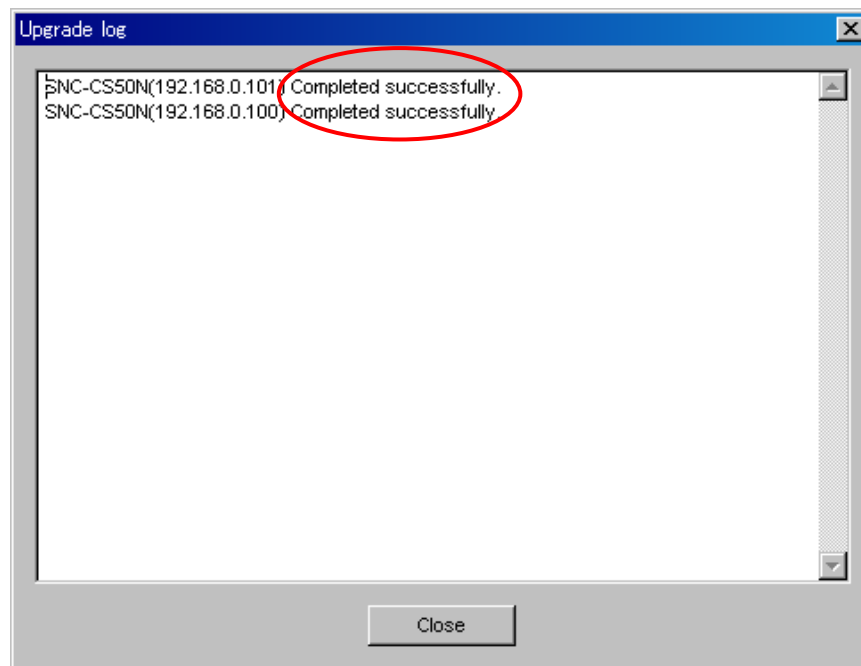
3.10. The version up is in progress.

**Do not turn off the power of the camera.**

**It takes about 10 minutes per a camera to complete the version up.**



3.11. Completion of the version up displays the following log screen. Confirm the result of the upgrade, then click the “Close” button to close the log screen. Finally, click “Finish” button to finish the application.



3.12. Input the camera's IP address , the Administrator's name and password in the fields, then click the **Next>** button.

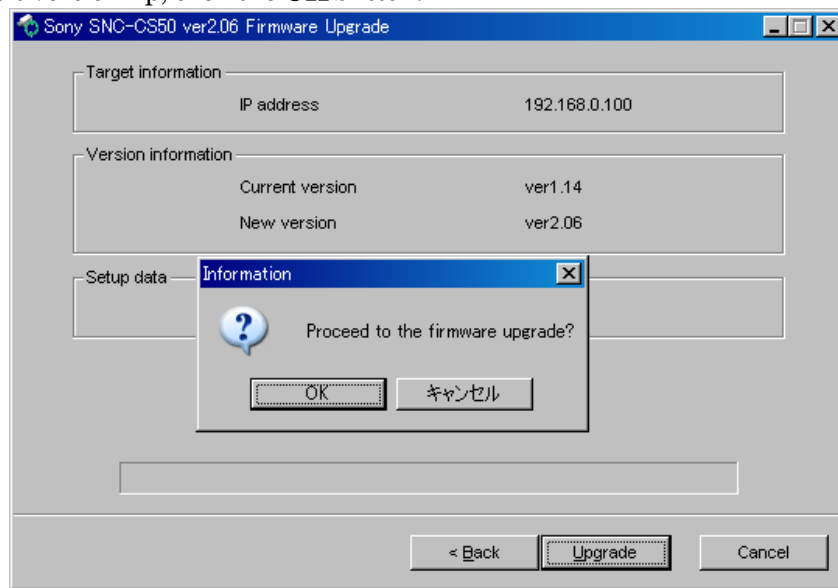
The default settings of Administrator's name and password are "admin".

The screenshot shows the 'Sony SNC-CS50 ver2.06 Firmware Upgrade' dialog box. It is divided into three sections: 'Target camera', 'Login', and 'Setup data'. In the 'Target camera' section, the 'IP address' field is set to '192 . 168 . 0 . 100' and is circled in red. The 'HTTP port No.' is set to '80'. In the 'Login' section, the 'Administrator name' and 'Administrator password' fields are both empty and circled in red. The 'Setup data' section has two checkboxes: 'Retain the current settings' (checked) and 'Backup the current settings' (unchecked). At the bottom, there are three buttons: '< Back', 'Next >', and 'Cancel'.

3.13. The old and new software version are displayed. Confirm it, then click **Upgrade** button.

The screenshot shows the 'Sony SNC-CS50 ver2.06 Firmware Upgrade' dialog box. It is divided into three sections: 'Target information', 'Version information', and 'Setup data'. In the 'Target information' section, the 'IP address' is '192.168.0.100'. In the 'Version information' section, the 'Current version' is 'ver1.14' and the 'New version' is 'ver2.06', with the 'New version' field circled in red. The 'Setup data' section has a checkbox for 'Retain the current settings.' which is checked. At the bottom, there are three buttons: '< Back', 'Upgrade', and 'Cancel'.

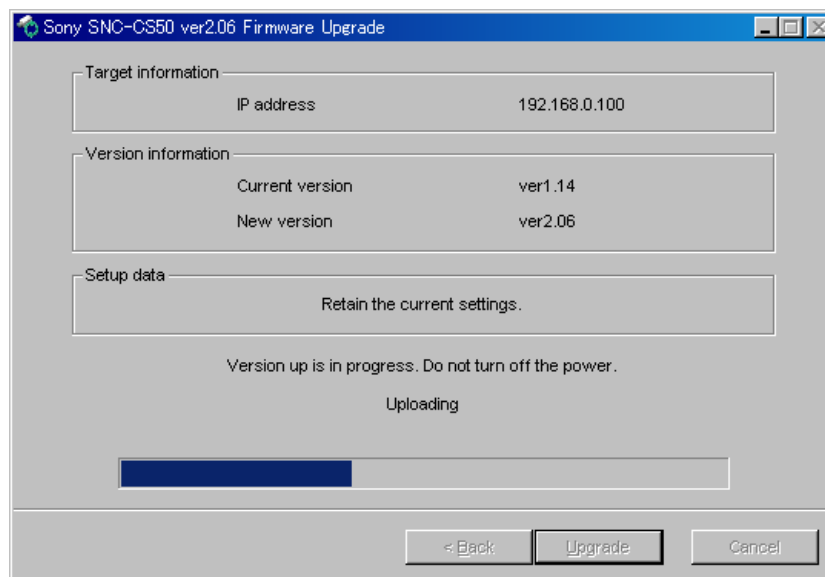
3.14.. To start version up, click the **OK** button.



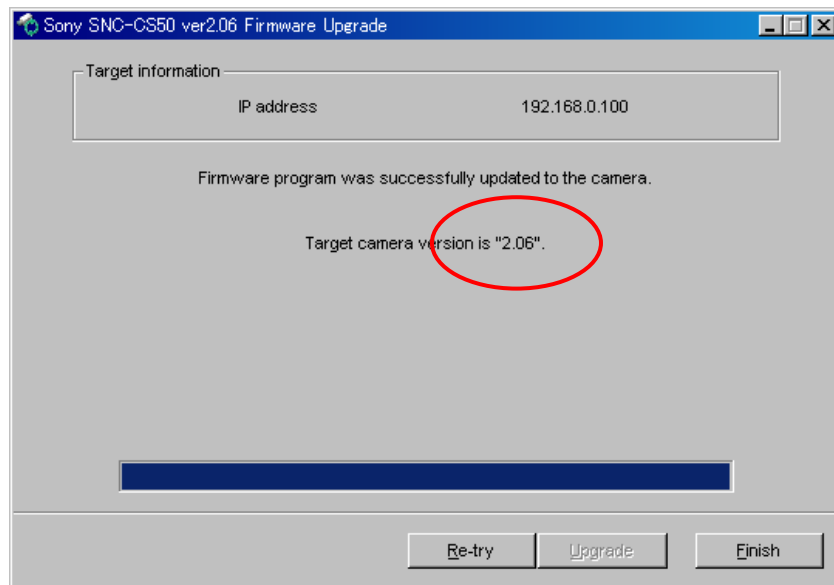
3.15. The version up is in progress.

**Do not turn off the power of the camera.**

**It takes about 10 minutes to complete the version up.**



3.16. Completion of the version up displays the following screen. Confirm the version of the camera, then click the **Finish** button to finish the application.



#### 4. Confirm the images

Enter the following URL in the URL box on the browser and confirm that the images are displayed.

<http://192.168.0.100/en/AViewer.html?codec=jpeg>

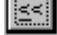
After the confirmation, click **Home** button.

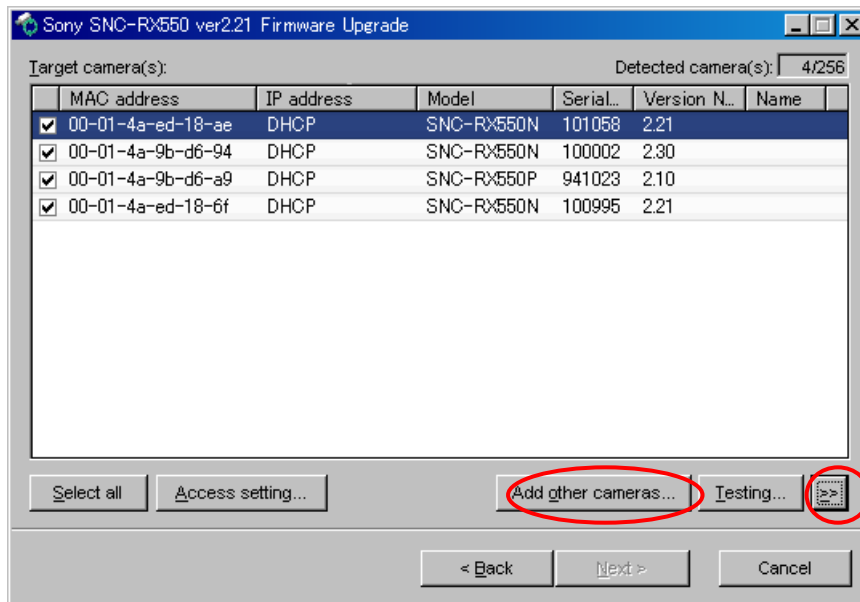
#### 5. Finish

Turn off the camera , disconnect the power supply and the network cable.

## Appendix

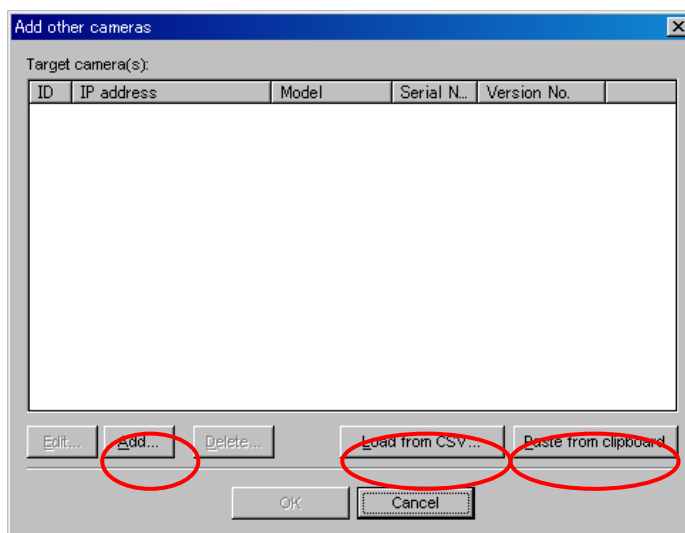
### A.1. Add camera

A.1.1. When you want to add other camera, click  button, and then click, "Add other cameras..." button.

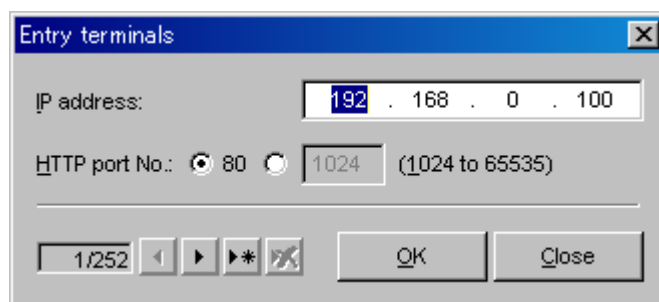





A.1.2. There is the 3 methods by how to add camera.



- The method for setting IP address and HTTP port No. Explanation is section A.1.3.
- The method for reading CSV file. Explanation is section A.1.4.
- The method for pasting the data on clipboard. Explanation is section A.1.5.



A.1.3. The method for setting IP address and HTTP port No.  
Click “Add” button, this dialog is showed



Set the IP address and HTTP port No., then click , , or . The camera can be registered temporarily.

If you click , or , you can succeed pre-register of camera.

When you exit this dialog, click .

A.1.4. The method for reading CSV file.

When you register the camera by CSV file, Click "Load from CSV..." button and select CSV file.  
The data format is as follows.

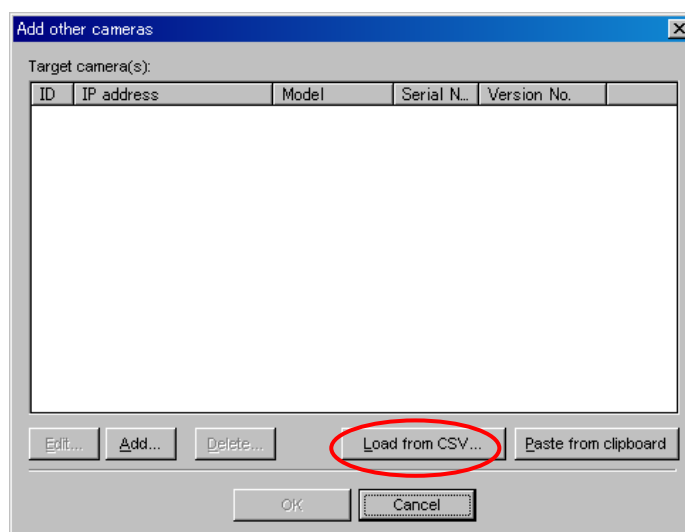
IP address, port no. [Return]

[Example]

192.168.0.100,80

192.168.0.101,80

192.168.0.102,80



A.1.5. The method for pasting the data on clipboard.

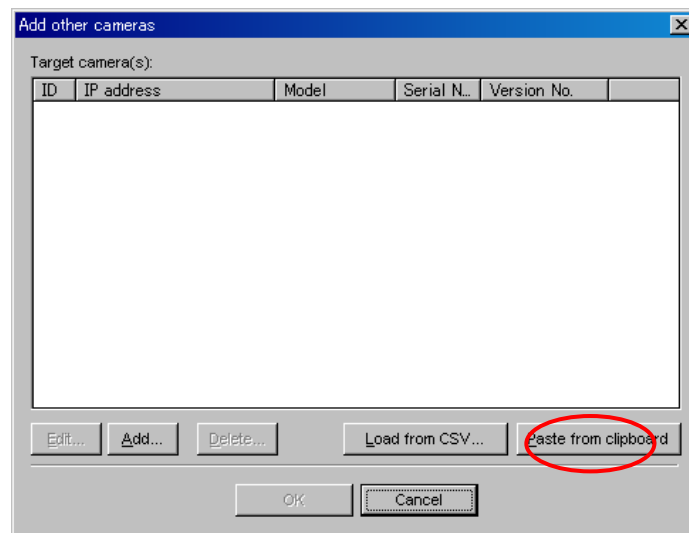
IP address, port no. [Return]

[Example]


192.168.0.100,80

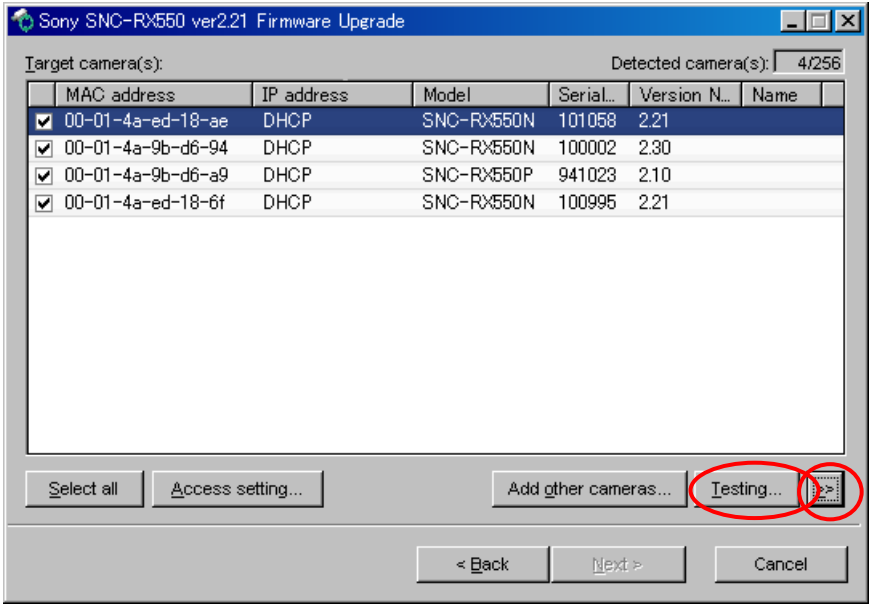
192.168.0.101,80

192.168.0.102,80

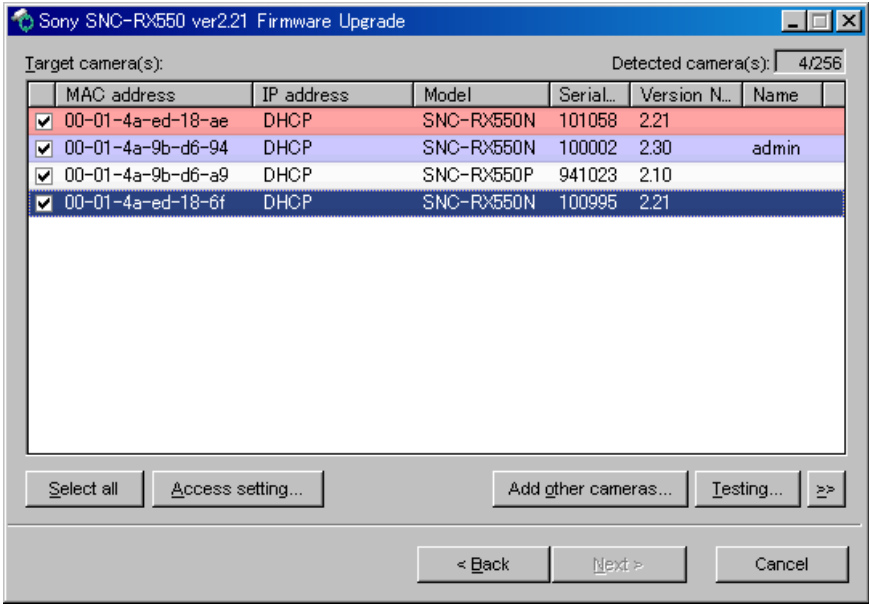


A.2 Connecting test

A.2.1. When you confirm the connection, click  and click “Testing...” button.



A.2.2. When it is succeeded, the line is to be . But when not succeeded, it is to be .



----- End of file -----